

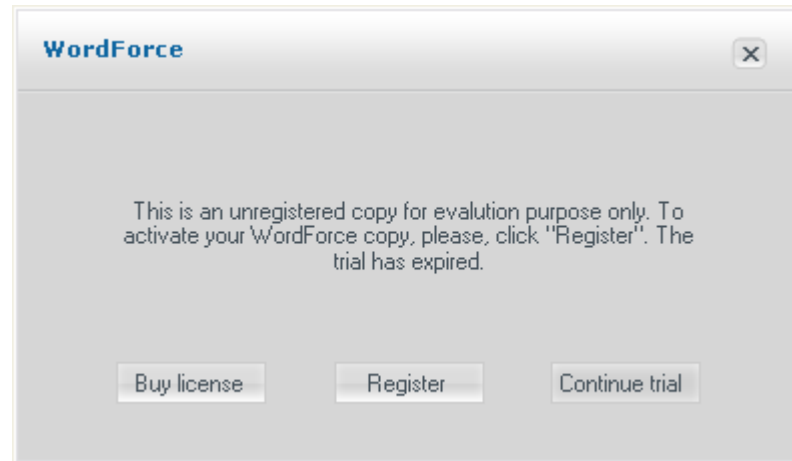


**Instructions for Your
WORDFORCE 3.0
Registration**

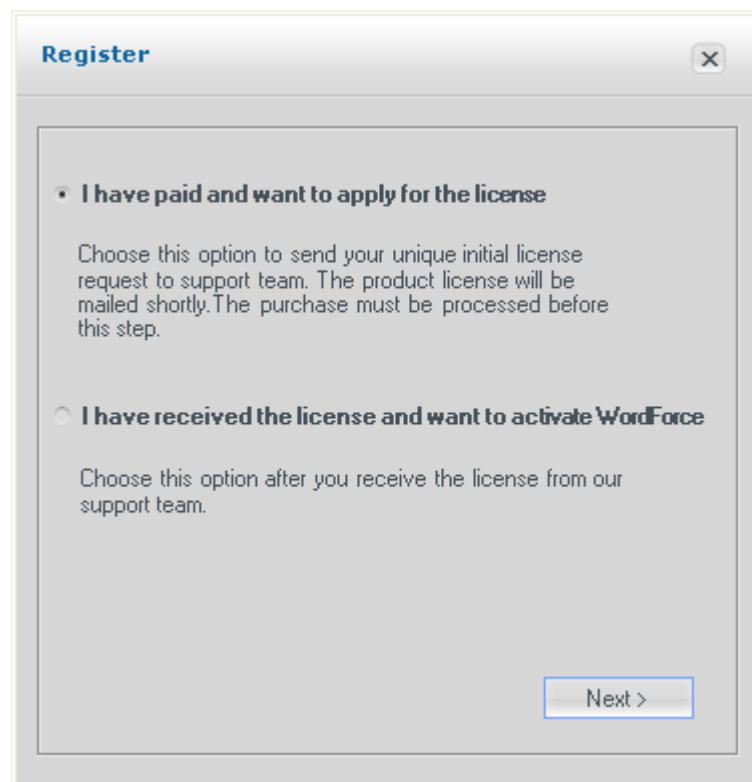


After you have successfully completed the purchase, please register your product.
To do this you have to do the following simple steps:

1. Launch your Microsoft Word. WordForce dialog box will automatically appear. If not, you can find it on the **WordForce 3** tab (for Microsoft Word 2007 on the **Add-ins** menu).
2. In the open dialog box, click **Register**:



3. In the appeared **Registration** dialog box, select the first option **to apply for the license**:



4. Click **Next** to continue.
5. In the appeared dialog box, complete the registration information:

Apply for the license

To apply for the license please follow the next steps:
1. Fill in your details.
2. Press "Send request" button to send us your unique initial code.

User Name

Company

E-mail

< Prev Send request

NOTE: To complete the verification procedure in the **User Name** field, type the **exact username** used for purchasing of a WordForce license.

6. Click **Send request** to send your application to ElearningForce Support Team. Within 1 business day you will receive an Email with a license file.
7. In the **Registration** dialog box, select the second option to activate your WordForce:

Register

☐ **I have paid and want to apply for the license**

Choose this option to send your unique initial license request to support team. The product license will be mailed shortly. The purchase must be processed before this step.

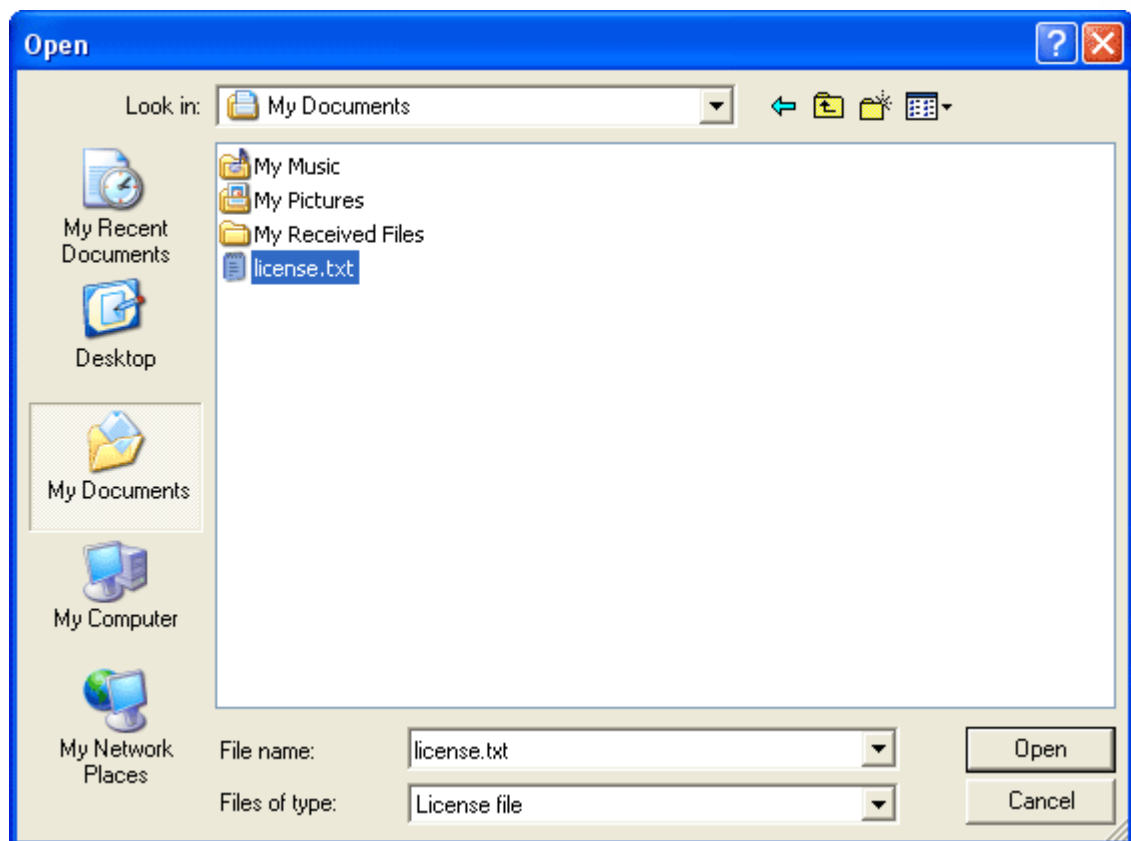
☒ **I have received the license and want to activate WordForce**

Choose this option after you receive the license from our support team.

Next >

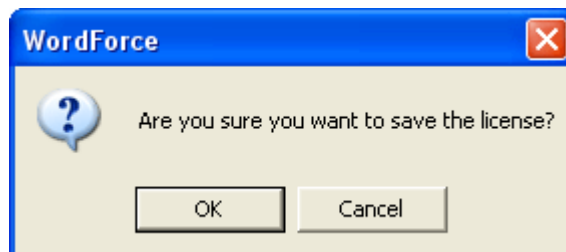
8. Click **Next** to continue.

9. In the appeared window, find and select the *license.txt* file you have received:



10. Click **Open**.

11. In the appeared dialog box, click **OK** to activate your WordForce:



12. Enjoy your full product version!

Some other links that can be helpful to you in case you encounter any installation problems or any other questions about QuizForce,

Check our online help covering system requirements and all the product features:

http://www.elearningforce.com/Documents/WordForce/Manual/Published_3.0/index.html

Feel free to request the needed support at:

http://www.sharepointlms.com/helpdesk/ticket_submit.php

ElearningForce Support Team